

Early Man

Food Sorting Activity

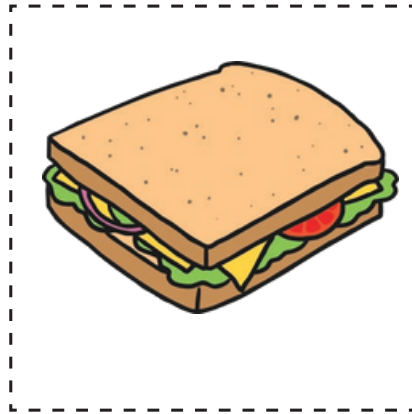
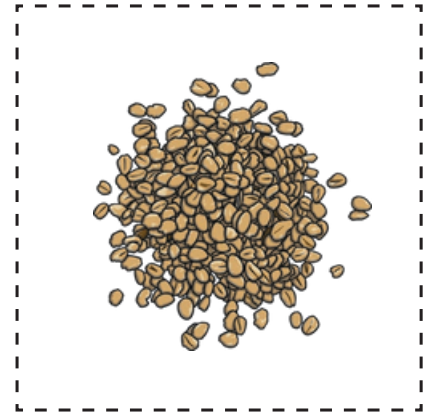
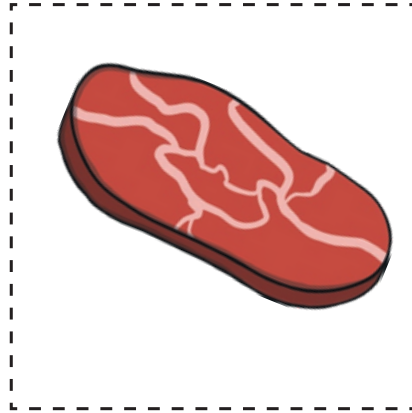
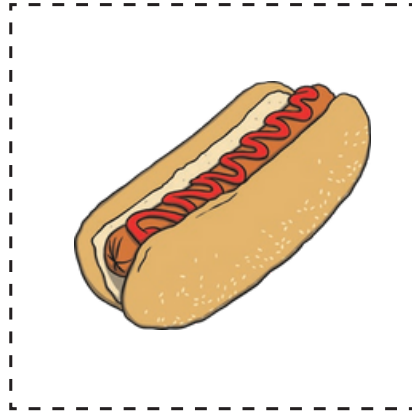
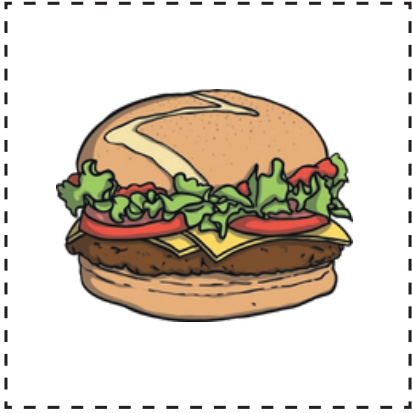
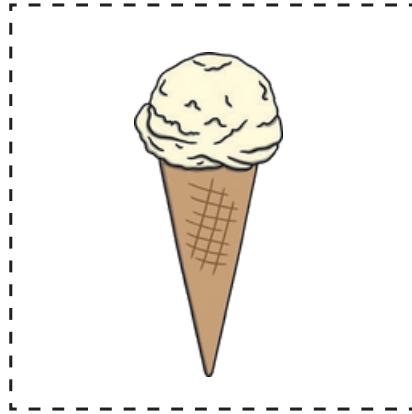
Cut out the pictures of food and stick them into the boxes to show what Early Man did or did not eat.

Food Early Man Ate:



Food Early Man Did Not Eat:





Early Man

Food Sorting Activity Answers

Food Early Man Ate:

- nuts · berries
- meat · oats ·
- seeds

Cut out the pictures of food and stick them into the boxes to show what Early Man did or did not eat.

Food Early Man Did Not Eat:

- sweets · ice cream ·
- burgers · hot dogs ·
- sandwiches